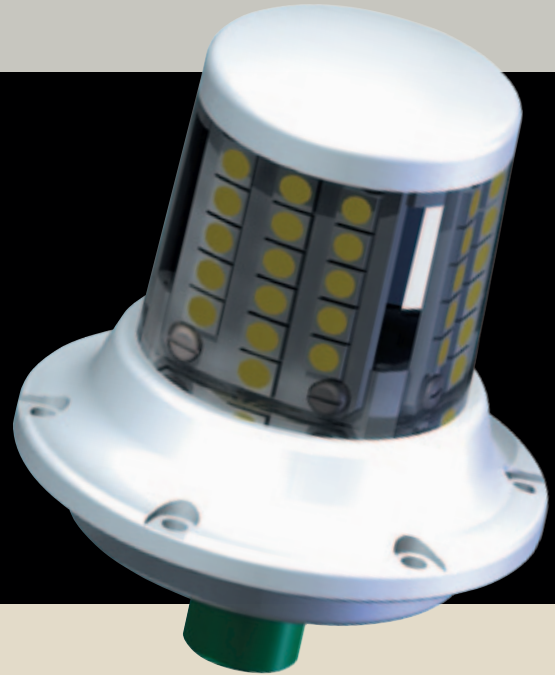


# TM Strobe Light

The TM Strobe Light is installed on helicopters and light airplanes for the aircraft light marking, detection, determining its position and motion direction, inflight and on the ground



## VERTICAL SPATIAL DISTRIBUTION OF STROBE LIGHT LUMINOUS INTENSITY

ANGLE ABOVE OR BELOW THE HORIZONTAL PLANE	EFFECTIVE LUMINOUS INTENSITY, AT LEAST
from 0° to 5°	150 cd
from 5° to 10°	90 cd
from 10° to 20°	30 cd
from 20° to 30°	15 cd

The strobe light has two implementations: with red and white light. The flashing frequency is programmable and can be set to any permitted value out of the 40 to 100 Hz range.

The TM Strobe Light with light diodes is noted for the low power consumption, absence of colour filters, no moving parts high reliability (MTBF of at least 25000 hours), shock-proof structure, tolerance to vibration and temperature gradient.

The TM Strobe Light is designed for standard bezels and is installed without any mechanical or electrical adaptations. Continuous operation time is 18 hours, power input is not more than 15 W. The TM Strobe Light light and spectral characteristics are in full compliance with FAR-23.

## SPECIFICATION

RATED SUPPLY VOLTAGE	27 V
CURRENT UTILISED AT RATED SUPPLY VOLTAGE	not more than 0.5 A
BEACON FLASHING FREQUENCY (PROGRAMMABLE)	40 – 100 Hz
ABSOLUTE VALUE OF EFFECTIVE LUMINOUS INTENSITY AT THE RATE SUPPLY VOLTAGE	300 cd
PRODUCT MASS	0.35 kg
DIMENSIONS	70x70x98 mm